



Vacuum Truck Supplies

QUALITY - INTEGRITY - COMMITMENT



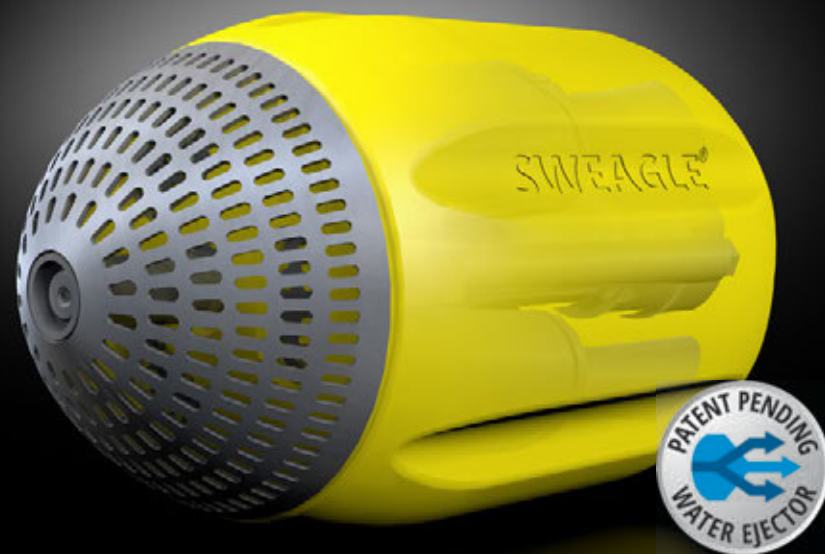
NozzTeq®

TAKING SCIENCE TO THE SEWER

Vacuum Truck Supplies – Proud re-seller of NozzTeq® Products



SWEAGLE®



The **SWEAGLE®** has a design developed from our long experiences and know-how. With the patent pending built-in ejectors system of the SWEAGLE®, in combination with AquaTeq's advanced water-conducting tube water-directing system, greatly increases the water velocity in the sewage or stormwater pipe and thus extremely moves the material more efficiently.

SWEAGLE® utilize the water in sewage and stormwater pipes, to effectively move debris in pipe, at as low working pressure as 3500PSI at the nozzle. The **SWEAGLE®** sucks the water from the pipe **up to 3 times** compare with the supply from the high-pressure pump.

SWEAGLE® performs efficiently also in dry pipes at a very low operating pressure.

Using **SWEAGLE®** provides major savings regarding water and fuel consumption along with wear on jetting truck and a reduction in work hours spent on site.

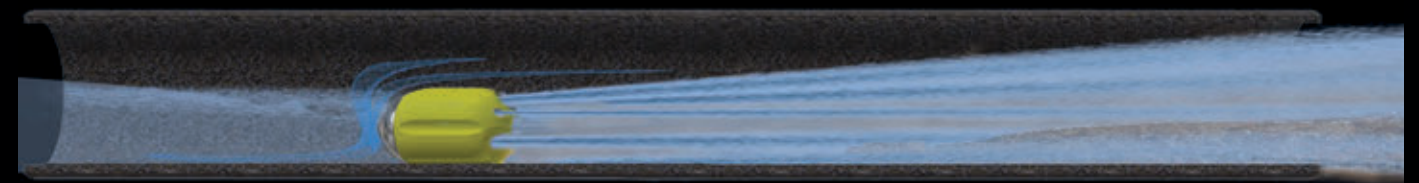
- **Powerful and cost-effective ejector nozzle.**
- **Removes sand, sludge, stones, and other debris in pipe.**
- **Removes material all the way out to pipe wall.**
- **Performs just as well in water filled as well as dry pipes.**

THE NEW STANDARD

OF EJECTOR NOZZLES

SWEAGLE® is recommended to be used in:

Water-filled pipes: 10" – 60"



General pipe cleaning (no high-water level): 10" – 32"



The **SWEAGLE®** is supplied with a front sieve acting as a coarse filter, minimizing the risk of ejectors being clogged internally. The sieve can easily be removed and cleaned.





HIGH END CLEANING NOZZLES

BL SWIPER®

Max cleaning power at low operating costs

BL SWIPER® is a series of nozzles, developed for cleaning sewers and storm water pipes in a cost effective and resource saving manner.

The construction of the **BL SWIPER®** is made to optimize the cleaning effect by using the waterflow from the high-pressure pump together with the jet streams with extreme power.

BL SWIPER® will not damage lined or PVC pipes and works effectively under water.

Perfect adaption to every mission

Extreme power even under water

Saves time, fuel, water and wear

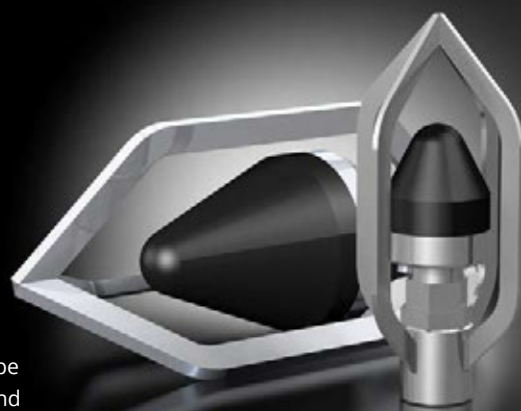
Low service and life time costs



JAWS®

In the **JAWS®** series of cleaning nozzle the water is looped around a system of conduits for maximum pulling and cleaning power, wear resistance and safety.

That means your crews will clean more pipe with fewer passes, generating less wear and tear on pipes and trucks, using less fuel and water.



Unique design and long service lifetime

MANTA® & C-RAY®

MANTA® is designed for both sanitary and storm cleaning where the debris is left on the bottom of the pipe. With its unique design and interchangeable rear plates, booth clean and recycle water can be used (15"-60").

C-RAY® bottom cleaning nozzles are for clean water use only and are available in 2 sizes. C-RAY® 200, (8"-24") and C-RAY® (15"-60").

All nozzles are designed for maximizing the water stream (Tier 3).



Optimum pulling and cleaning power

GOBLIN®

GOBLIN® is the original Laminar Flow cleaning nozzle developed already in 1984 by AquaTeq™. High-Quality stainless-steel construction with optional wear body for large model. The perfect choice for general pipe or drainage cleaning. Available with different jet angles with one or four front jets.



Compact flow and wear resistant design



LUMBERJACK®

THE ORIGINAL



LUMBERJACK® - The original low-torque, high-speed cutter (up to 50 000 rpm) that have serviced the industry for more than 30 years.

- Cuts roots, light concrete, grease, mineral deposits, tuberculation, protruding laterals, chemical buildups, and much more.
- Because of its low-torque, it's unlikely to get stuck, spin off the hose or cut through host pipe.
- No after use service and rarely needs replacement of the water-cooled bearings.
- Available in different models for optimal cleaning effect offering the best solution for your needs.
- **LUMBERJACK®** series of cutters cover pipe sizes from 3" up to 48"
- Best long-term investment with average service lifetime of 7-15 years, and sometimes even longer.

ROOT CUTTERS

LUMBERJACK®LJ050 is the smallest turbine cutter in the LUMBERJACK® series. LJ050 is the most powerful small cutter on the market. LJ050 cover pipe sizes from 3" up to 6" and is supplied complete in a kit. LJ050 can be supplied with ½" or ¾" hose connection. The cutter can operate effectively with as low water flow rate as 10 US GPM and can handle pressures up to 3500 PSI.



LUMBERJACK®LJ075 is the 2nd smallest cutter in the series. It can be supplied with ½", ¾" or 1" hose connection. The LJ075 cutter can operate effectively with as low water flow rate as 16 US GPM and can handle pressures up to 3500 PSI. LJ075 cover pipe sizes from 4" up to 10" and is delivered as a kit according to your needs. For ¾" and 1" hose connection the cutter can be used up to 12" pipes.



LUMBERJACK®LJ175 is the largest cutter suitable for ½" hose. It can be supplied with not only ½" but also ¾" or 1" hose connection. The LJ175 operates effectively from 16 US GPM and can handle pressures up to 2200 PSI. LJ175 cover pipe sizes from 6" up to 12" and is supplied as a kit according to your needs.

The LJ175 due to the design is more powerful than the LJ075. If you do not have the need to cut 4" pipes, the LJ175 can be the cutter of your choice.



LUMBERJACK®LJ200 can easily be connected to ¾", 1" or 1 ¼" hose connections and all cutters are supplied set up according to pump and hose data received from user. The LJ200 operates effectively already at 50 US GPM and can handle pump pressures up to 3500 PSI. LJ200 operate in pipe sizes from 6" up to 12". The LJ200 kit is supplied according to your needs and specifications.



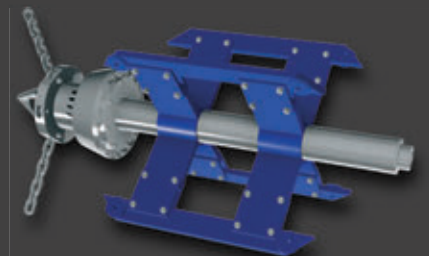
LUMBERJACK®LJ300 is in one of our most popular cutters on the market and can be supplied with ¾", 1" or 1 ¼" hose connection. Firm sleds or adjustable sleds are available for most pipe sizes.

The LJ300 operates effectively already at 58 US GPM and can handle pump pressures up to 3500 PSI. LJ300 operate in pipe sizes from 8" up to 36". For larger pipe sizes minimum 90 US GPM.



LUMBERJACK® LJ700 The power from the large turbine together with the weight of the cutter cut the most severe roots from 16" up to 48" pipes. Special solutions with aluminium expander plates are available.

Many customers use this solution for removal of mineral and chemical deposits and tuberculation. The LJ700 needs minimum 90 US GPM and for larger pipes the water flow rate needs exceed 105 US GPM. LJ700 handles pressures up to 2200 PSI, at the cutter.



*More LUMBERJACK® versions are available



STANDARD NOZZLES

With more than 40 years in the industry, we offer knowledge, training and a comprehensive program of cleaning nozzles to help you solve the toughest assignments. Our cleaning nozzle program offer a wide range of products to solve most missions in pipe, with long service life time and energy efficiency.

GLOBAL™ - The number one of standard cleaning nozzles

GLOBAL™ GROUND is our lightweight and compact everyday nozzle to be used to remove material in pipe such as sludge, sand, and minor stones. This means the nozzle has no front jets. The nozzles are supplied with 4 or 6 rear jets. We use the same philosophy as for our high-end nozzles, meaning we design our nozzles with fewer rear jets with larger jet size, instead off many small holes, which only create weak and misty water jets.



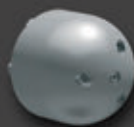
GLOBAL™HIT is part of the GLOBAL™series with drilled waterjet holes. As the rest of the series, they are lightweight and compact and suitable as your everyday nozzle to open up clogged pipes and remove lighter material in pipe. This means GLOBAL™HIT is supplied with thrusting rear jets and one front jet.



GLOBAL ICEBEAR® is one of our most popular nozzles in the GLOBAL™series, supplied with three front jets, angled towards the centre of the nozzle. Due to their lightweight and compact construction they easily manoeuvre in pipe and effectively open more severe blockages in pipe sizes from 2" - 16". GLOBAL ICEBEAR® is supplied with thrusting rear jets and three front jets.

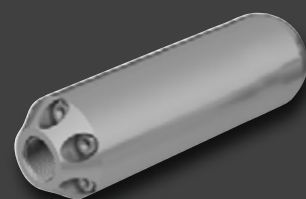


MULTI-GLOBAL® sewer penetrating nozzle is a spin off from our popular GLOBAL® series of nozzles but has replaceable jet orifices. MULTI-GLOBAL® sewer nozzle can be setup in multiple configurations. This sewer nozzle has a short design with a beveled edge to get in those hard to reach spots. The pipe cleaning nozzle can be used with nozzle extensions or sleds.



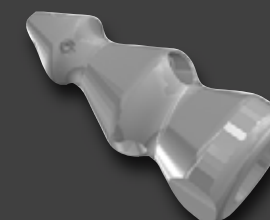
GLOBAL™ SUPER PENETRATOR

GLOBAL™ SP has substantial weight and sits low on the bottom of the pipe. Minimizes risk of nozzle turning in pipe and allows to successfully navigate over small voids, off-sets, drop joints etc. in the pipe. Possible of up to 4 front jets.



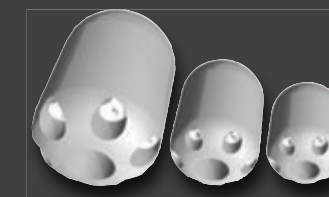
FIR® POINTED – The master of jammed pipes

FIR® POINTED is due to its soft shape and the possibility of up to 4 front jets, a very efficient tool for removing obstacles in pipe. With thrusting jets in a two-level construction, the nozzle effectively works its way through a jam.



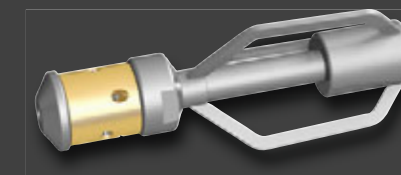
GOBLIN® GRENADE - Maneuverability in pipe

GOBLIN® GRENADE is engineered for optimum maneuverability and to prevent nozzles from getting stuck. Improved internal flow design give a more efficient cleaning. Can be supplied with front jet.



BL SPINNER® - The 360° cleaning nozzle

BL SPINNER® series of high quality, fast rotating nozzles are developed for effective removal of grease, smoother deposits, smaller roots etc. in pipe. The rotating body is reversible allowing 45° to shoot forward.



CHISEL NOZZLE -

Chisel Nozzle is an all-purpose nozzle to open clogged pipes, remove general debris, grease as well as smaller roots in pipe. Sharp edges with multiple forward jets deliver powerful penetration to effectively open blockages, cut through grease, ice and thinner roots. A multipurpose nozzle well placed in your toolbox containing different type of nozzles to allow you to solve the everyday cleaning challenges.



FIR® -

FIR™ sewer nozzle is designed for penetrating clogged pipes, ice or remove sand, sludge etc. The FIR's pointed shape and only one front jet, the FIR™ effectively works its way into the clog or ice, without losing the thrusting power. This is very similar to how a step drill works as it moves forward it opens the blockage.








OPTIMISE YOUR INVESTMENT

The chart below is the result from a live test performed in Sweden, where a 9" pipe built above ground, length 260 feet, was filled with 900 lbs sand, gravel and stones.

Different nozzles were used to clean the pipe completely under the same conditions (same pressure in nozzle, same load of debris in pipe etc.).

The chart shows time needed for each nozzle to clean the pipe completely as well as total water and diesel consumption.

Tier	No. of jets and size (mm)	Pressure at nozzle (PSI)	Flow in nozzle (US gpm)	Time consumed (minutes)	Total water consumption (gallons)	Diesel consumption (US gpm/project)	Diesel cost per year*
1	 11 x 2,2	870	40	345	13 670	39.6	\$ 34 760
2	 7 x 3,0	870	46.2	120	5 547	13.7	\$ 12 056
3	 7 x 3,0	870	72.6	60	4 358	6.8	\$ 5 632
3	 6 x 3,0	870	68.7	30	2 060	3.4	\$ 2 992
3	 4 x 3,5	870	54.9	30	1 648	3.4	\$ 2 992

*) "Diesel cost per year" shows the total diesel cost (average price june 2023) for each nozzle doing the same task once a day for 220 days.

To facilitate and clarify the performance efficiency of different cleaning nozzles, we use a classification system from tier 1 to tier 3.

TIER 3:

Tier 3 pipe cleaning nozzles (Storm and sewer) have an advanced (often patented) water conductive design (Conduit/Tube System) and are equipped with replaceable jet orifices for easy adaptation to different pump capacities.

Compared with Tier 2, Tier 3 nozzles have double efficiency in terms of both total water consumption and time.

This will greatly affect overall fuel consumption and environmental impact.

TIER 2:

Tier 2 pipe cleaning (storm, sewer) nozzles have no internal water conducting design but are equipped with replaceable jet orifices for easy adaptation to different pump capacities and improved water stream.

TIER 1:

Tier 1 pipe cleaning (storm, sewer) nozzles have no internal water conductive design and are equipped with drilled holes.

CLEANING ACCESSORIES

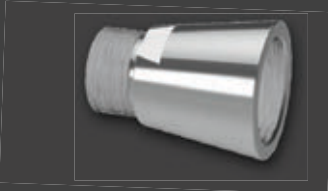
NozzTeq® offers a wide range of accessories for pipe cleaning with proven products for professional use.

Accessories for cleaning nozzles

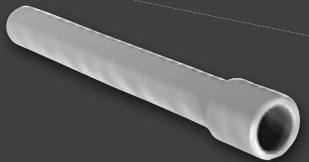
Wide range of jets with M4 threads up to ¼" made in different materials to enable us to supply the best solution in each individual case.



Nozzle adaptors are designed not to interfere with jet stream from nozzle.



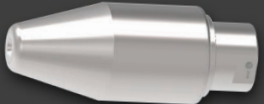
Quality stainless steel extender pipes to prevent nozzle from turning in pipe or entering laterals.



Hose protectors are easy to use and prevents costly hose damages.



High efficiency Surface Cleaners.



VTs & NozzTeq® – Problem solvers and system supplier.

NozzTeq® was founded in 2006, as daughter company in the United States of the parent company AquaTeq® located in Sweden. AquaTeq noticed that the time the deficiencies in the nozzle designs, so they took on the challenge to increase the efficiency of sewer and storm water cleaning industry.

With their proven innovation of the designs, they brought that to North America, hence the forming of NozzTeq. Throughout the years they have created several new products, so unique that they have been patented both in the United States and internationally.

VTs are Industry Leaders in quality, design and engineering of vacuum tanker manufacturing for over 25 years. Our passion for the job is our point of difference.

We have built and supplied over 1000 trucks, trailers and portable units for operators Australia wide and we make sure our customers have the right equipment, training and ongoing support to run their business

Come to us with your problems and we will develop a tailor-made solution that will perform with the highest efficiency, lowest possible energy consumption and is fit for purpose.



Vacuum Truck Supplies

QUALITY – INTEGRITY – COMMITMENT

vacuumtrucksupplies.com.au

Vacuum Truck Supplies

18 Crosbys Lane Mansfield
Victoria, 3722 Australia

Phone

General (03) 5775 7300 Sales 1800 822 787

Email

General info@vacuumtrucks.com.au Sales sales@vacuumtrucks.com.au